



METRIXTM
HEALTHCARE INDIA

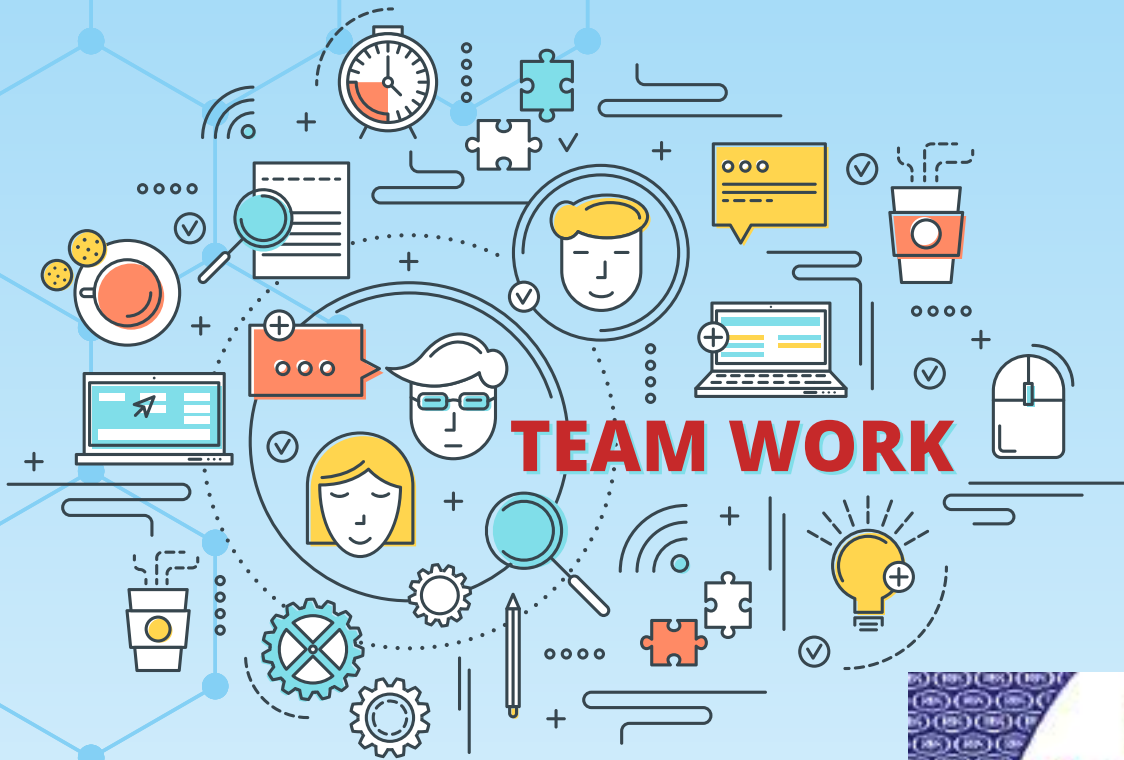
AN ISO 9001 – 2015 & WHO – GMP CERTIFIED COMPANY



*Commitment to Quality
with Global Vision*



Company Profile



For BMG Conformity Assessment Services Pvt. Ltd.
 400 North Center Dr., STE 202 Norfolk, VA 23502, United States of America (USA)
 Accredited by United Accreditation Foundation (UAF)
 UAF IS MEMBER OF IAF
 UAF
 BMG



METRIXTM

HEALTHCARE INDIA

AN ISO 9001 – 2015 & WHO – GMP CERTIFIED COMPANY

Commitment to Quality with Global Vision...

ABOUT US...

We the Metrix believe in Quality human life for which we commit ourselves fully, Our Mission & Motto is to raised the standards of Human life by the way of providing them -QUALITY PRODUCTS-. With vast experience of more than 20 years in the pharma industries, **Mr. Anuj Gupta** (Founder & Chairman) the lead man of the mission in his capabilities has built up a team of professionals who change impossibilities to more equation of mind making things easier and simple. METRIX has challenged all the barriers of the market and has rooted itself firmly in this competitive environment. Mr. Anuj Gupta has played a vital role in our success. His knowledge, guidance and foresightedness has enabled us to remain step ahead of our competitors. He knows what are the new trends ruling the market and ensure that the clients are served accordingly. Metrix Healthcare India in to existence in the year 2018. With in a short span of 3 years, it has become one of the fastest growing **Ethical pharmaceutical** company focussing on Quality Products. Metrix Healthcare India proved its competency as the leading Manufacturer and Exporter of the wide range Of Pharmaceuticals Drugs. All of our products are known for their optimum quality & effectiveness and find applications in Pharma Industries. Our dedicated marketing team and allied professionals help us to co-ordinate with suppliers to offer a quality range of products which are of the international standards. METRIX is an ISO 9001 - 2015 & WHO - GMP Certified Company. All the products are manufactured at Schedule-M & WHO GMP approved units, with lots of care. or quality control. We aim to achieve perfection. We hope to build a new world of Safety, Surety & Trust.

Mission:

METRIX believe in quality human life for which we commit ourselves fully, our mission and motto is to raise the standards of human life by the way of providing them 'Quality Drugs'. The goal of our business entity is to acquire complete customer satisfaction through projection of quality work in trading and supplying business.

Vision:

To become the most admired pharmaceutical company in India having substantial global presence with leadership in market share and profits by Building distinctive sales and marketing capabilities. we shall pursue world-class standards in our People. Products, Processes and Performance Inculcating a high-performance culture. Our aim is not just earning money but to serve mankind also.

Quality:

Quality being our prime forte has helped us to remain ahead of our competitors. Our products are tested stringently and passed through various tests. We ensure that these products are formulated under hygienic conditions so that they are kept free from impurities. Our plant conforms to the GMP norms and GMP is followed at every stage of process of manufacturing. Separate quality testing unit helps us to check the products on prescribed standards. We lay down great emphasis over the quality of our range and ensure that they are formulated in confirmation with the specific guidelines. No stone are left unturned by us. in ensuring that only the best range is delivered to the customer's end. Our experts keep close eye on each stage and ensure that products are kept free from any kind of flaw.

Client Satisfaction:

We have gained a prominent position in industry by satisfying the varied needs of our customers in an appropriate manner. Our experts interact with the clients and ensure that they are served in an appropriate manner. We have been able to capture large market area by serving the customer's needs in successful manner.



TABLETS / CAPSULES



ALBENMET PLUS Tab. Albendazole 400 mg & Ivermectin 6mg Tab.	1X1 BLISTER
ATDOX-200 Tab. Cefpodoxime Proxetil - 200 mg. Tab.	1X10 ALU-ALU
ATDOX PLUS Tab. Cefpodoxime Proxetil - 200 mg. with Clav. Potta.125mg. Tab.	1X10 ALU-ALU
BILATRIX-20 Tab. Bilastine 20mg Tab.	1X10 ALU-ALU
BILATRIX-M Tab. Bilastine 20mg + Montelukast 10mg Tab.	1X10 ALU-ALU
CALCIMET PLUS Tab. Calcium Carbonate 500 mg + Vit D3	1X15 BLISTER
CALCI-CUBE Tab. Calcium Carbonate 1250 mg + Calcitrol 0.25mcg. + Zinc Sulphate Monohydrate 7.5 mg. Tab.	1X10 BLISTER
D3 CURE 60K Cap. Cholecalciferol 60,000 IU Vitamin D3 Softgel Capsules	1X4 BLISTER
DEFMET-6 Tab. Deflazacort - 6 mg Tab.	1X10 ALU ALU
DICLOMET Tab. Diclo Sodium 50 + Para 325 mg Tab.	1X10 BLISTER
DICLOMET-C Tab. Diclo Potassium 50mg + Para 325mg + Chlorzoxazone 250 mg Tab.	1X10 ALU-ALU
ESOMET-DSR Cap. Esomeprazole - 40mg + Domperidone 30mg Cap	1X10 ALU-ALU
ITRAMET-200 Cap. Itraconazole 200mg Cap.	1X10 ALU ALU
LECE-5 Tab. Levocetizine 5 mg. Tab.	1X10 ALU-ALU
LECE-M Tab. Levocetizine 5 mg+ Montelukast 10mg. Tab.	1X10 ALU-ALU
LEVOMET-250 Tab. Levofloxacin 250 mg Tab.	1X10 ALU-ALU
LEVOMET-500 Tab. Levofloxacin 500 mg. with L.B.	1X10 ALU-ALU
LUMET-A TAB Artemether 80 mg with Lumefantrine 480 mg Tab.	1X10 ALU-ALU
LINZOMET Tab. Linezolid Tablets IP 600 mg.	1X10 ALU-ALU
METACOLD PLUS Tab. Paracetamol 500 mg + Caffeine 30mg + Phynlepherin HCL 5mg. + Diphenhydramine 25mg. Tab.	1X10 BLISTER

METCEF-250 Tab. Cefuroxime Axetil- 250 mg. Tab.	1X10 ALU-ALU
METCEF-500 Tab. Cefuroxime Axetil- 500 mg. Tab.	1X10 ALU-ALU
METCLOX Caps. Amoxycillin 250 mg + Cloxacillin 250 mg + Lactic Acid Bacillious Cap.	1X10 ALU-ALU
METDOL-100 Tab. Tepentadol-100mg Tab.	1X10 BLISTER
METROSPAS PLUS Tab. Mefenamic acid 250mg with Dicyclomine Hydrochloride 15mg tab.	1X10 BLISTER
MOCA-625 Tab. Amoxycillin 500mg + Clavunate 125 mg with LB Tab.	1X10 ALU-ALU
MY AZI-250 Tab. Azithromycin 250 mg Tab.	1X6 BLISTER
MY AZI-500 Tab. Azithromycin 500 mg Tab.	1X3 BLISTER
METZYME Tab. Pancreatin, Bile Constituent & Activated Dimethicone Tab.	1X10 ALUMINUM
METSTON-200 Tab. Progesterone Sustained Release 200 Mg Tab.	1X10 BLISTER
METFLU-400 Tab. Favipiravir 400mg Tab.	1X10 ALU-ALU
NIMUT-P Tab. Nimesulide 100mg+Para 325 mg	1X10 BLISTER
OFLAMET-200 Tab. Ofloxacin 200 mg	1X10 BLISTER
OFLAMET-OZ Tab. Ofloxacin 200 + Ornidazole 500 mg	1X10 BLISTER
OMEMET Caps. Omeprazole 20 mg	1X10 ALU-STRIP
OMEMET-D Caps. Omeprazole 20 mg + Domperidone 10mg	1X10 ALU-STRIP
ONMET- 4 Tab. Ondansetron 4 mg tab	1X10 ALU-ALU
PACEMET-SR Tab. Aceclofenac 200 mg (SR Tab.)	1X10 ALU-ALU
PACEMET Tab. Aceclofenac 100 + Paracetamol 325 mg	1X10 ALU-ALU
PACEMET-SP Tab. Aceclofenac 100 mg + Para 325 mg + Serra 15 Mmg.	1X10 ALU-ALU
PACEMET-T Tab. Aceclofenac-100mg + Paracetamol 325 mg + Trypsin-chymotrypsin 150000	1X10 ALU-ALU

PENTRAZ[®] Tab.

Pantoprazole 40 mg

PENTRAZ D[®] Tab.

Pento 40mg +Domperidone 10mg

PENTRAZ-DSR[®] Cap.

Pentaprazole 40 mg + Domperidone 30mg. Sustain Release

PENTRAZ-LSR[®] Cap.

Pentaprazole 40 mg + Levosulpride 75mg.

PENTRAZ-IT[®] Cap.

Pantoprazole Sodium 40mg & Itopride Hyd.150mg Sustain Release Cap.

PGAMET-M[™] Cap.

Prigabalin 75 mg + Methylcoblamine 750 mg

PGAMET-NT[™] Tab.

Pregabalin (SR) 75 mg, Nortriptyline Hydrochloride 10mg, Methylcoblamine 1500 mcg. Tab.

REMITRIX-20[®] Tab.

Rabeprazole 20 mg

REMITRIX D[®] Tab.

Rabeprazole 20mg +Domperidone 10mg

REMITRIX-DSR[®]

Rabeprazole 20 mg + Domperidone 30mg.

REMITRIX-LSR[®] Cap.

Rabeprazole 20 mg + Levosulpride 75mg

RIFAMET-200 Tab.

Rifaximin 200 mg tab.

RIFAMET-400 Tab.

Rifaximin 400 mg tab.

SERRAMET-D[®] Tab.

Serra10 mg + Dico K 50 mg

TRIFIX-100[™] Tab.

Cefixime Dispersible100 mg tab with L.B.

TRIFIX-200[™] Tab.

Cefixime 200 mg with LB tab.

TRIFIX-O[™] Tab.

Cefixime 200mg + Ofloxacin 200 mg. with lactic acid bacillus tab.

TRIFIX-S[™] Tab.

Cefixime 200mg + Sulbactam 150 mg tab.

UDOMET-300 Tab.

Ursodeoxycholic Acid 300mg Tab.

1X10 ALU-ALU**1X10 ALU-ALU****1X10 ALU-ALU****1X10 ALU-ALU****1X10 ALU-ALU****1X10 ALU-ALU****1X10 ALU-ALU****1X10 ALU-ALU****1X10 ALU-ALU****1X10 ALU-ALU****1X10 ALU-ALU****1X10 ALU-ALU****1X10 ALU-ALU****1X10 ALU-ALU****1X10 ALU-ALU****1X10 ALU-ALU****1X10 ALU-ALU****1X10 ALU-ALU****1X10 ALU-ALU****SYRUP****ALBENMET[™] Susp.**

Albendazole200mg Suspension

10ML**AROMET-XN[™] Syrup**

Ambroxol 15mg + Terbutalin 1.25mg + Guaiphenesin 50mg + Menthol 1mg Syrup

100ML**AROMET-LS[™] Syrup**

Ambroxol Hydrochloride 30 mg +Levosulbutamol Sulphate 1 mg + Guaiphenesine 50 mg

100ML**ATDOX DRY[™] Syrup**

Cefpodoxime Proxetil - 100 mg.

30ML**ATDOX PLUS DRY[™] Syrup**

Cefpodoxime Proxetil - 100 mg with Clavulanate Acid-62.5 mg

30ML**COTRIX[®] Syrup**

Dextro 10mg + CPM 2mg + Phynlepherine Hyd. 5mg

100ML**COTRIX PLUS[®] Syrup**

Dextro 15mg + Cetirizine 5mg + Phenylephrine 10mg Ambroxol 30mg + Guaiphenesin 100mg + Sodium Citrate 75mg

100ML**CYPROMAT[™] Syrup**

Cyprohaptidine 2mg + Tricholine Citrate 275mg + Sorbitol (70%) 3.575 mg Syrup

200ML**LECE-M[®] Susp.**

Leveocetirizine Dihydrochloride 2.5mg + Montelukast 4mg Syrup

60ML**LUMET-A DRY[™] Syrup**

Artemether 40 mg with Lumefantrine 240 mg Dry Syrup

30ML**METACID[™] Susp.**

Oxetacaina + Mag. DiOxide + Alu.H.o. Susp.

170ML**METACID PLUS[™] Susp.**

Dried Aluminium Hydroxide 250 mg + Magnesium Hydroxide 250 mg + Activated Dimethicone 50 mg. Susp.

170ML**METACOLD PLUS[®] Susp.**

Para-250mg + CPM 2mg + Phenylephrine 5mg Susp.

60ML**METACOLD[®] Susp.**

Para-125mg + CPM 1mg + Phenylephrine 5mg Susp.

60ML**METROSPAS[™] Susp.**

Mefenamic Acid 50mg + Paracetamol-125mg

60ML**METROSPAS PLUS[™] Susp.**

Mefenamic Acid 100mg + Paracetamol-250mg

60ML**MEXTOSE Syrup**

Lactulose Solution USP 3.335gm

200ML**MOCA DRY[™] Syrup**

Amoxycilin-200 MG & Clavulanate Acid 28.5mg + LB for Oral Suspension U.S.P.with WFI

30ML**OFLAMET-M[®] Susp.**

Ofloxacin 50 mg+ Metronidazole 100mg Susp.

60ML**PARAMET Susp.**

Paracetamol - 250 mg each 5 ml

60ML

AYURVEDIC



ORTHOMET Oil

Ayurvedic oil for Joint Pain (Roll-On Bottle)

50 ml

TM LIVRON Syrup

Liver tonic - Ayurvedic

200 ml

[®] METFAST Syrup

Leucohorrea & Menstrual Disorders

200 ml

GASTOMET Syrup

The Gastric Protector Ayurvedic Syrup

200 ml

APPIMET Syrup

Appetizer Syrup

200 ml

STONOMET Syrup

Stone Remover Ayurvedic Syrup

200 ml

OINTMENT



TM DICLOMET Gel

Diclofenac Diethyl Amine Gel

15 gm

LULIMET Cream

Luliconazole 1.0% w/w Ointment

30 gm

TM MEEZOL-GM Cream

Clobetasol Propionate 0.05% + Neomycin Sulphate 0.5 % + Clotrimazole 1% Cream

10 gm

NUTRACEUTICALS



ATLEX Syrup

Vit. B-Complex + L-Lysine Syrup

200ML

ATPRO Powder

Protein Powder (American Ice-cream flavoured)

200GM

CARBI Cap.

Carbonyl Iron + Folic + Vit. Cap.

1X10 BLISTER

TM CALCIMET Susp.

Calcium +Magnesium +Zinc + Vit D3

200ML

TM FEAT PLUS Cap.

ferrous ascorbate with folic acid & Vit. B12 Cap.

1X10 ALU-ALU

TM FEAT-XT Syrup

Ferrous Ascorbate 30mg + Zinc Sulphate 22.5mg + Folic Acid 500mcg + Cynacoblamine 100mcg + L-Lysin 50mg.

200ML

[®] HAEMET Cap.

Ferrous Fume.+ Folic Acid+ Vit. B12 Cap.

1X10 BLISTER

[®] HAEMET Syrup

Haematinic Syrup

200ML

ISABMET Powder

Isabgol Powder

100GM

[®] LEXIMET Syrup

Vit. B-Complex + L-Lysine Syrup

200ML

TM LYCOMET Cap.

Lycopen with Multivitamin Cap.

1X10 ALU-ALU

TM LYCOMET Syrup

Lycopen with Multi-Minerals Syrup

200ML

TM LYCOMET PLUS Syrup

Lycopen with Multi-Minerals with L-Lysin Syrup

200ML

METO-7G Tab.

Multivitamin & Multiminrals with Antioxident Tab.

1X10 ALU-ALU

M-SLIMMY Powder

WEIGHT LOSS POWDER with 5 Different Flavoured. (Vanilla / Kesar / Strawberry / Cappuccino / Chocolate)

500GM

MET-SLIM Powder

Weight Loss Powder with 5 different Flavoured. (Vanilla / Kesar / Strawberry / Cappuccino / Chocolate)

1000GM

TM METCAL Tab.

Coral Calcium 500 mg. with Vit D3 250 iu. Tab.

1X10 ALU-ALU

TM METCAL PLUS Tab.

Calcium Citrate 1000 mg + Vit K2-7 25 mg + Alfacalcidol 0.25 mcg + Zinc 4mg + Magnesium Oxide 10 mg + Copper 1mg + Megnesium Sulphate 1.8 Mg & Boron 250 bcg. Tab.

1X10 ALU-ALU

MET-D3 Drop

Vitamin D3 I.P. 400 I.U. Drop

30ML

[®] M-COM PLUS Cap.

Cynacobalamine1500 mcg. + Alpha Lipoic Acid-50mg + Folic acid 1.5 mg

1X10 ALU-ALU

TM METLAC Cap.

Pre & Pro Biotics Cap.

1X10 ALU-ALU

TM METROFORCE Cap.

Antioxidant with Vit. A, E, C Cap.

1X10 BLISTER

TM METSTRUM-500 Tab.

Colostrum - 500 mg Tab.

1X30 TAB

[®] METZYME Syrup

Enzyme Syrup

200ML

[®] METZYME PLUS Syrup

Diastase 300mg + Pepsin 30mg + L-Lycin Hcl 10mg + Thiamine 1.275mg + Carminative Oil 1mcg + Carway Oil 1mcg + Cinemon Oil 1mcg

200ML

[®] METZYME FORTE Drop

Alpha Amylase 18.75mg + Papain 5mg + Dill Oil 1mg + Anise Oil 1mg + Caraway Oil 1mg.

30ML

[®] METZYME Drop

ENZYME Drop

30ML

OXY-QU PLUS Cap.

(Coenzyme Q-10 120mg + Piperine 6mg Cap)

1X10 ALU-ALU

PROTOMET PRO

Protein Powder with DHA & B12 (Gluten Free)

200GM

PROTOMET GOLD

Protein Powder with DHA & B12 (Gluten Free)

200GM

RIVIT Tab.

Multi Vitamins with Multi Minerals Tab.

1X10 ALU-ALU

RIVIT Drop

Multi Vitamins with Multi Minerals Drops

30ML

RIVIT Syrup

Multi Vitamins with Multi Minerals Syrup

200ML

VITA FRESH-105 gm Powder

Dextros Powder + Vitamin C

VITA FRESH-35 gm Powder

Dextros Powder + Vitamin C

VITA-ORS 21.8 gm Powder

ORS Powder

INJECTIONS**CEFTRIX-250 MG Inj.**

Ceftriaxone 250 mg Inj.

CEFTRIX-500 MG Inj.

Ceftriaxone 500 mg Inj.

CEFTRIX 1 GM Inj.

Ceftriaxone 1 gm Inj.

CEFTRIX-SL Inj.

Ceftriaxone 1gm + Salbactam 500mg Inj.

CEFTRIX-TZ Inj.

Ceftriaxone with Tazobactam 1.125mg, Inj.

CEFRA-SL Inj.

Cefoparazone + Salbactam 1.5 Inj.

MET-IRON Inj.

Iron Sucrose Inj.

M-COM 500 Inj.

Methylcobalamine 500 mcg. Inj.

M.COM PLUS Inj.

Methylcobalamine 1500 mcg with Benzyl Alcohol 2% Inj. (DISPO PACK)

M.COM MAX Inj.

Methylcobalamine 1500 mcg + Pyridoxine 100 mg + Niacinamide 100 mg + Alcohol 2% Inj. (DISPO PACK)

MY-PENUM Inj.

Meropenem - 1000 mg Inj.

MY-PENUM SL Inj.

Meropenem - 1000 mg + Salbactam 500mg Inj.

MARTI-120 Inj.

Artesunate -120 mg Inj.

METATHER Inj.

α β arteether Inj.

PARAMET I.V FLUID

Paracetamol I.V.1000 mg

PEPTRIX 4.5 Inj.

Pipracillin + Tazobactam Inj. 4.5gm Inj.

PENTRAZ-40 I.V. Inj.

Pantoprazole 40 mg Inj.

105GM**35GM****21.8GM****250MG****500MG****1GM****1.5GM****1.125GM****1.5GM****100MG****2ML****2ML****2ML****1GM****1.5GM****120MG****2ML****1000MG****4.5GM****40MG****UPCOMING PRODUCTS****CLAUSIMET Susp.**

Bacillus Clausil Spores Susp.

10ML**COLMET-MOUTH WASH**

Chlorhexidine Gloconet solution 0.2% Mouth Wash I.P.

100ML**DROXYMET-100 Cap.**

Doxycycline Hydrochloride 100mg with Lactic Acid Bacillus Cap.

1X10 ALU-ALU**D3-CURE 60K NANO SHOT**

Cholecalciferol 60,000 I.U. Nano Shot

10ML**FLUTRIX (Nasal Spray)**

Fluticasone Propionat IP 50mg

10ML**METCEF DRY Syrup**

Cefuroxime Axetil- 100 mg.

30ML**MONTECAST-FX Tab.**

Montelukast 10mg + Fexofenadine 120mg Tab.

1X10 ALU-ALU**METSIL-FM Syrup**

Silymarin, L-Ornithine, L-Aspartate, Multivitamin & Folic Acid Syrup

200ML**METSTON-300 Tab.**

Natural and Micronised Progesterone Sustained Release 300 mg Tab.

1X10 BLISTER**MEGRA-100 Tab.**

Sildenafil Tab.

1X10 BLISTER**METDRONE Inj.**

Nandrolone Decanoate 50mg Inj.

50MG**METCEF-CV Tab.**

Cefuroxime Axetil- 500 mg. with Clavulanic Acid 125 mg Tab

1X10 ALU-ALU**PACEMET Susp.**

Aceclofenac-50mg + Paracetamol 125 mg Susp.

60ML**SUCRALFATE Susp.**

Sucralfate 1gm + Oxetacine 20mg Susp.

200ML**SKIN-MET Cream**

Hydroquinone 2% + Tretinoin 0.025% + Mometasone Furoate 0.1% Cream

30GM

AVAILABLE IN THESE COUNTRIES.....



METRIXTM

HEALTHCARE INDIA

AN ISO 9001 – 2015 & WHO – GMP CERTIFIED COMPANY



- **Balarus**
- **Bangladesh**
- **Bhutan**
- **Congo**
- **Columbia**
- **Denmark**

- **Guyana**
- **Iran**
- **Indonesia**
- **Kenya**
- **Kazakistan**
- **Nepal**

- **Nigeria**
- **Philippines**
- **Peru**
- **Sri Lanka**
- **Sudan**
- **South Africa**

- **UAE**
- **Uganda**
- **Vietnam**
- **Yemen**
- **Zambia**
- **Zimbabwe**



METRIXTM

HEALTHCARE INDIA

AN ISO 9001 – 2015 & WHO – GMP CERTIFIED COMPANY

📍 712 - North Plaza, Near 4D Square mall,
Visat Gandhinagar Highway, Motera,
Ahmedabad - 380 005, Gujarat, India.

☎ + 91 94267 20882 / 079-4892 0882

✉ info@metrixhealthcare.com 🌐 www.metrixhealthcare.com

